



E-Classic



the best CHOICE

Are you considering purchasing an outdoor wood furnace? Please take a few minutes to read through this information and use it as a comparison guide when choosing your heating appliance. We will compare feature by feature why Central Boiler® produces the best outdoor wood furnaces on the market and is the industry leader. With this brochure, you will understand why the Central Boiler E-Classic® outdoor wood gasification furnace is the best choice.

CentralBoiler.com



E-Classic - Firebox Design and Capacity



Cutaway view of E-Classic 3200 showing firebox.

Large Firebox, Long Burn Times, Easy Clean Out, Exceptional Efficiency

The E-Classic features a **large firebox**, resulting in **long burn times**, **easy clean out**, and significant surface area for **maximum heat transfer**. **Exceptional efficiency** results from the E-Classic's unique design.



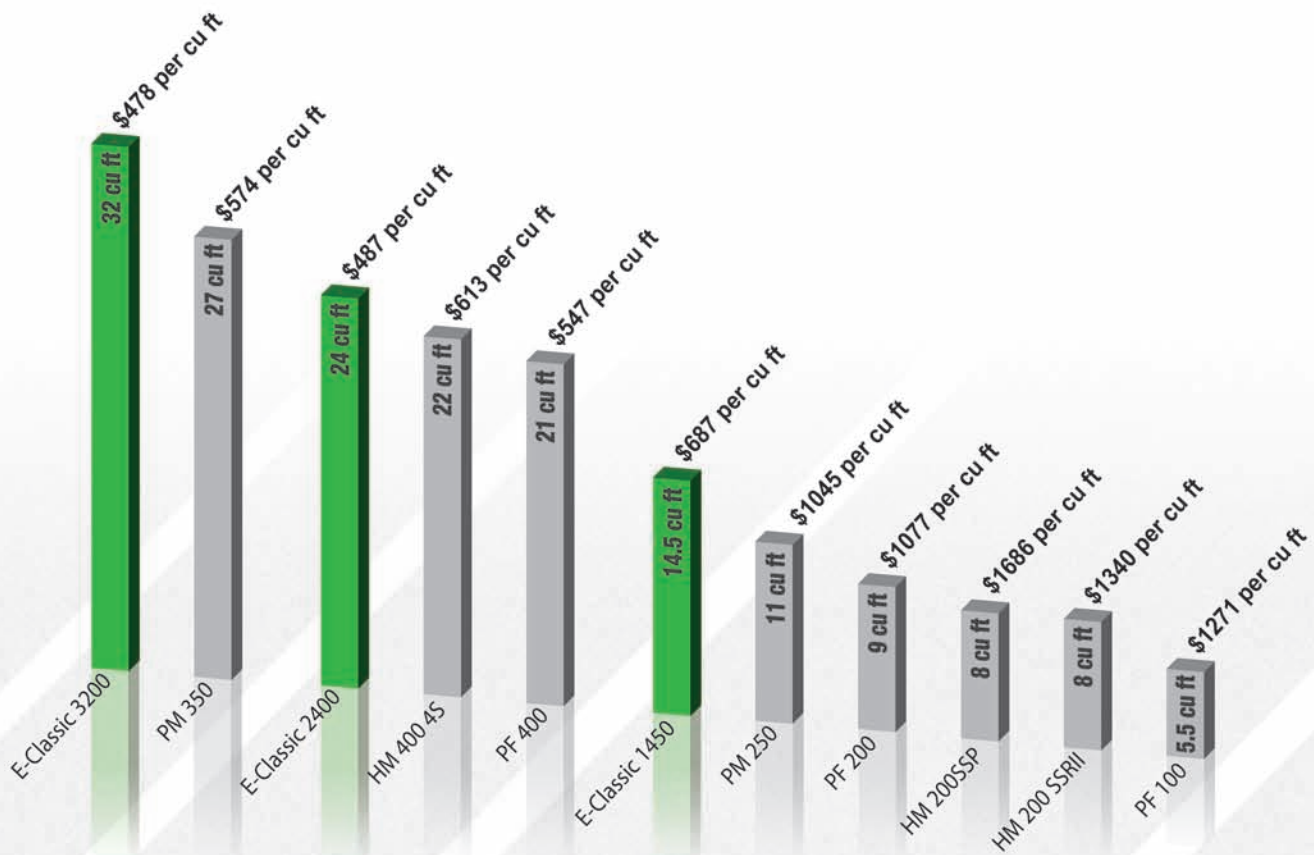
Removable Side Air Channels

The E-Classic side air channels inject air across the coal bed for **optimum performance** and efficiency. These air channels are **removable** making **cleaning and maintenance a breeze**.

*"The furnace has paid for itself. It may very well be the **best investment** I ever made."*

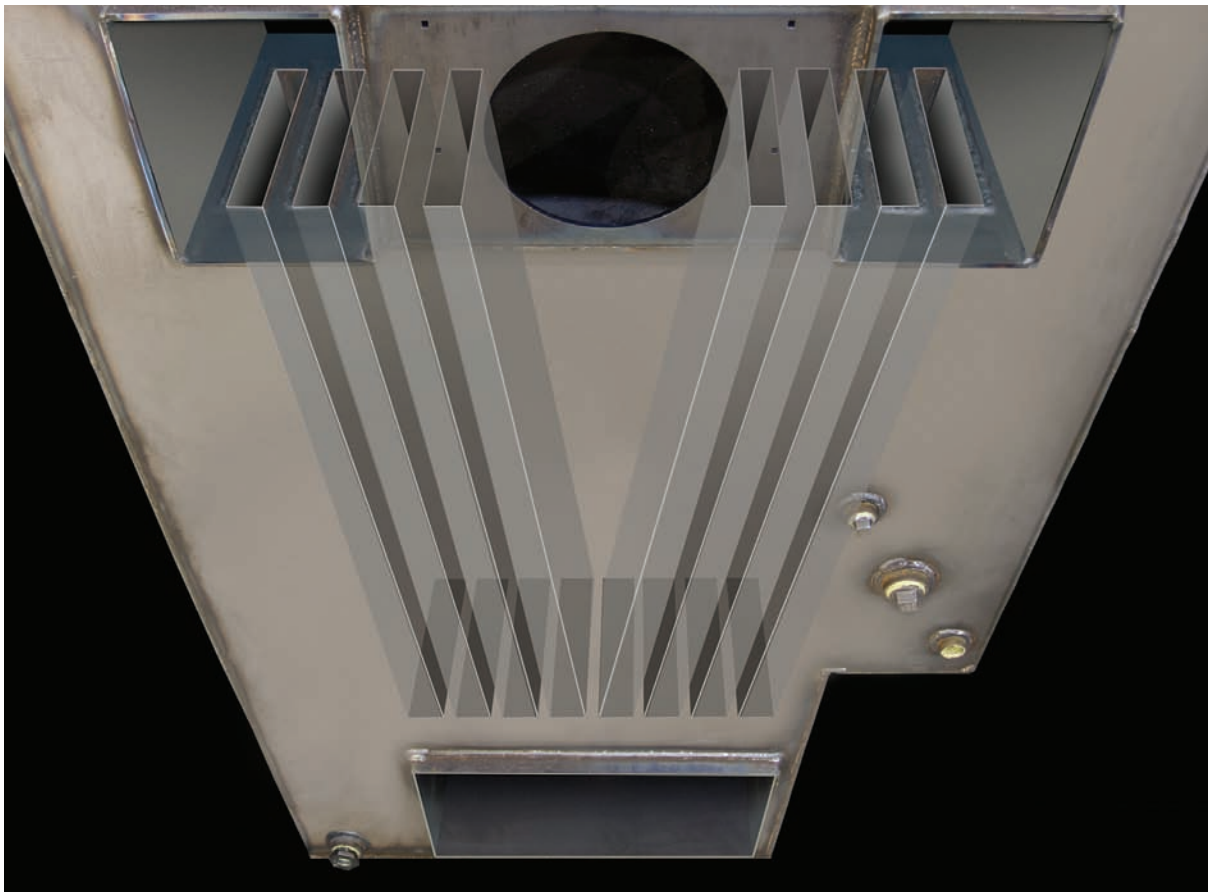
John, WV

How the E-Classic Compares to Firebox Sizes of Other Models (cubic feet)





E-Classic - Xtract Heat Exchanger

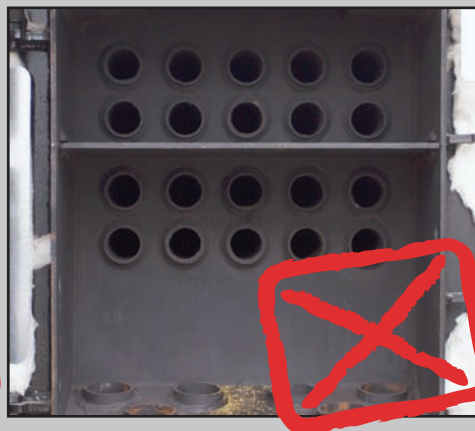


Vertical for Superior Performance, Rectangular for More Surface Area

Xtract heat exchangers are vertical which **allows ash to drop** into the Reaction Chamber clean out area instead of settling in heat exchanger flues. The rectangular design means **more square feet of heat transfer area**.



Other Designs: Dirty Horizontal Heat Exchanger Tubes



These horizontal heat exchanger flues must be cleaned frequently, adding one more time-consuming chore to your list. Some designs have as many as 30 tubes. Ash settles

in horizontal tubes and restricts or plugs air flow which reduces efficiencies and heat output performance.



Precision Control

Firestar™ II controller optimizes the burn by adding the right amount of combustion air for the best efficiency. Primary and secondary combustion air are controlled separately. Temperatures measured in the Reaction Chamber are used to modulate the secondary combustion air input to **maximize combustion efficiency and minimize emissions**.



FireStar™ II Controller

*"I can only say that it is the **best product** that I ever bought."*

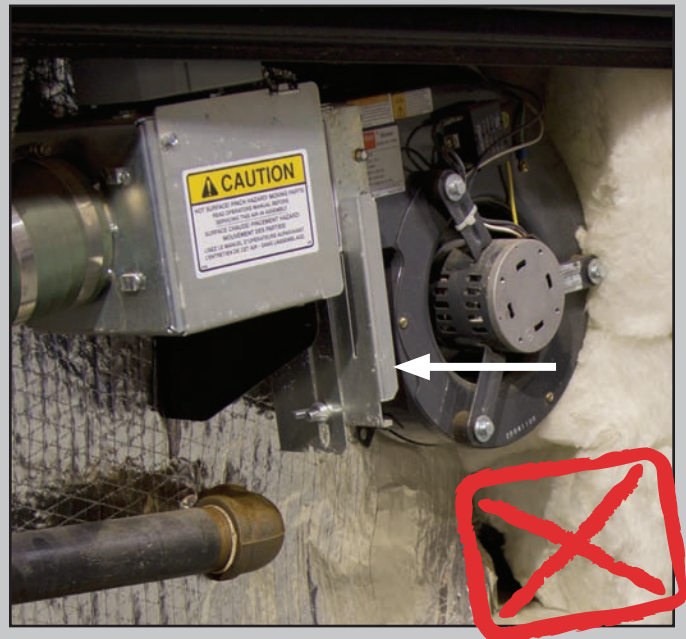
Joe, NY



Other Designs: Manual Guesswork and Luck



This low-technology design must be adjusted by hand to control primary and secondary air. Because the air input does not change with the constant varying conditions of the wood load, the fuel efficiency of this model is reduced.



This design must also be adjusted by hand. This unit uses an adjustable slider mechanism to regulate the amount of air that enters its primary and secondary air system.



E-Classic - Sprayed-on Urethane Foam Insulation



Central Boiler: Urethane Foam Insulation



Urethane insulation resists water penetration.

Others: Inferior Insulation



Fiberglass batts become saturated with water.

Quality, You Get What You Pay For

100% airtight and waterproof, urethane insulation allows for full coverage protection which **reduces heat loss and keeps wood consumption low**. There is no match for the urethane insulation used on Central Boiler furnaces. The sprayed-on urethane foam insulation provides a barrier that **does not degrade or compress** like fiberglass batt insulation. It provides **2-3 times the effective "R" value of conventional fiberglass batt insulation**. It will not break down and is rated for temperatures that far exceed that of the water jacket. Consider that the highest efficiency water heaters use urethane foam insulation.



Other Designs: Insufficient Insulation



Outdoor wood furnaces insulated with fiberglass batts allow air and moisture to move through them which increases heat loss and exterior water jacket corrosion. Some surfaces

are left completely uninsulated. Others use bubble wrap insulation which has an almost non-existent R-value.



The door for the rear access panel of the E-Classic is also **insulated with urethane foam** which keeps the air intake area warmer. By keeping this area warmer, combustion air can be pre-heated before entering the firebox. This process **increases efficiency**.

Here are a few energy-saving features of the E-Classic:

- Urethane foam insulation used throughout is **superior to fiberglass batts or bubble wrap**.
- **Triple-insulated firebox door** with silicone door seal.
- Recessed door frame for **less exposure to the outside air**.



Recessed Door Frame

With a recessed door frame, heat stays inside the furnace where it should be.

*"Wish we would have bought it years ago,
best investment we ever made."*

Sam, NY



Other Designs: Uninsulated Areas



This door frame extends far beyond the insulation and will extract heat from the water jacket, transferring it to the cold outdoors.



Not only is bubble wrap inferior insulation but it is prone to openings and gaps which can let cold air in.



Some designs have very large open areas that have no insulation covering at all.



E-Classic - Triple Insulated Firebox Door



If you've ever opened the firebox door on an E-Classic, it goes without saying: this door is **heavy duty, built to last, and latches smoothly for a tight and secure close.**

*"I love it, **best purchase** I ever made."*
Marshall, NH

Here are a few other reasons why the E-Classic firebox door is the best you'll find:

- Large opening for **easy loading and cleaning.**
- Cam Loc closure – **smooth, tight closure** that secures the door at all four corners.
- Triple Insulated – three layers of protection to keep the heat in and cold out for **maximum efficiency.**
- Ergonomic design allows **one-hand operation.**
- **Locks** to prevent unauthorized access.
- Silicone door seal – **maintains firebox pressure** better than braided rope does.



Triple Insulated Door

The E-Classic firebox door utilizes three layers of high-performance insulation for minimal heat loss.



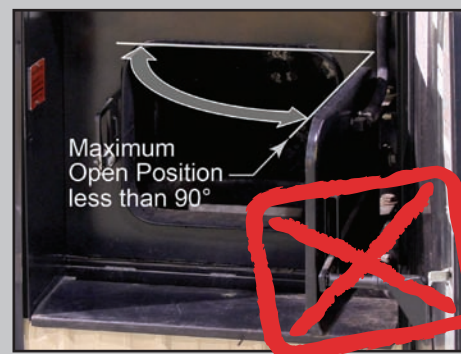
Other Designs: Insufficient or none at all



This design has a very large uninsulated area creating enormous potential for heat loss through the door area.



This door frame is completely exposed to the outside air. A design like this will transfer heat from the water jacket to the cold outdoors.



This door does not even open a full 90-degrees. You won't have very much room to position yourself in front of this door while loading wood.



E-Classic - Bypass Handle and Door



Exhaust gases being directed through the bypass door inside the furnace and into the chimney.

Bypass Handle shown in up position



Close-up of Bypass Handle



Bypass Door in open position Inside furnace

The Central Boiler E-Classic bypass door is spring-loaded and utilizes a gasket seal for optimum performance. The bypass door **allows you to redirect the exhaust before opening the firebox door**. In an environment where air input is tightly controlled, a sudden rush of oxygen through the firebox door could result in a brief flare of the fire. The bypass door helps to control the introduction of oxygen, and allows the fire to stabilize before opening the firebox door. After closing the firebox door, an audible signal reminds you to close the bypass door. The optional FireStar XP wi-fi module can send you a text message if the bypass door has been left open.

*"We have saved so much money; it's the **best investment** we ever made."*

Michelle, IA



Other Designs: Poor Seals or none at all



Bypass opening at the top of the firebox

Damper shown in the open position attached to the loading door

This unit uses a bypass door located at the front of the firebox near the loading door. The damper is opened by an actuator attached directly to the loading door itself. This mechanism gives no time for the combustion gases to redirect before the door is opened. This damper has a poor seal, allowing creosote to collect in the horizontal heat exchanger tubes.



E-Classic - LED Night Lights



The **energy-efficient, long-lasting LEDs** illuminate the firebox and sides of the furnace so you can safely carry out your duties no matter what time of day. The photoelectric controlled lights can even be set to **automatically turn on at night**. These innovative, built-in lights demonstrate just one more way Central Boiler is committed to saving you money by designing **convenient, environmentally friendly** features.

*"This furnace is built better than all the rest, **best investment** that I ever made for our home."*

Jeff, TN



Other Designs: Insufficient or none at all



While this model does have an external light, the firebox is recessed so far into the furnace the light doesn't reach it. If you need to load the furnace in the dark, this furnace will do you no favors.



This model has no external light at all.



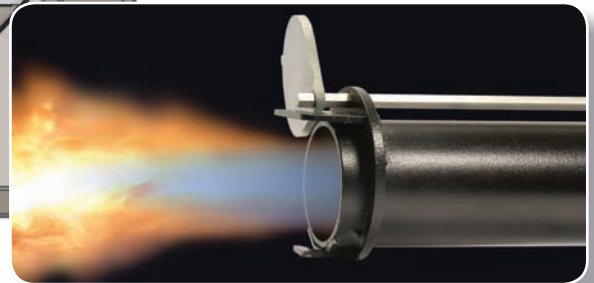
"Once you have it, you'll never want to be without it."



- *Ignites fire with the push of a button*
- *Automatically relights fire if needed*
- *Convenient*

Effortless, Ignite New Load - Worry Free

We are the only company that offers a **push-button ignition option to light the wood**. Normally, when you light the furnace in the beginning of the year, it stays lit when you fill it on a regular schedule. But the ignition option is a **convenience** for the times that you might be on a weekend vacation or you may have decided to stay at the lake for a couple extra days of fishing. When you get home, put some wood in, push the ignition button and it's just that simple. Those that install the ignition option make the comparison that it's similar to power windows or air conditioning in a car. Once you have it, it's one of those things you don't want to be without.



Burner shown here with cover in open position. Cover protects gas burner when not in use so burner stays clean for more efficient, reliable operation.

*"The furnace is one of the **best investments** in our house."*

Dan, AR



- Connect to your E-Classic outdoor furnace from anywhere by web-enabled computer, smart phone or tablet.
- View your furnace's operational status, water temperature and more.
- Gives you peace of mind when you are away from home.
- Helps you determine how long before you need to refill your furnace.

FIRE STAR™ II

ELECTRONIC CONTROLLER

- Monitors all functions of the furnace and can **store and share operational data**
- Operational data can be utilized with a memory card or on the FireStar™ XP module when connected to the FireStar™ II
- Controller's technology optimizes the gasification process by automatically adjusting the primary and secondary air for a **cleaner and more efficient burn**
- Works with optional FireStar XP wi-fi module to provide **remote monitoring of your furnace**



FireStar™ II electronic controller is standard on most E-Classic 1450, 2400 and 3200 models.



*Requires data plan to enable remote access. For a limited time, data plan is provided free of charge for first two years. Optional FireStar XP wi-fi module, wireless router and internet required.

FIRE STAR™ XP

WI-FI MODULE

- View water temperature and **make changes to the controller from the comfort of your house or garage**
- **Stay connected to your furnace** anywhere you go*
- **View performance and history** including local temperature, real-time status, charts and graphs
- With a data plan, choose to have **texts or emails sent to most any web-enabled device**
- Compatible with any FireStar II equipped E-Classic outdoor furnace





E-Classic
3200 Model

Clearly the Best

When you compare Central Boiler's outdoor wood gasification furnaces feature by feature with others in the marketplace, you'll see why Central Boiler is the proven industry leader when it comes to performance, quality and innovation. Central Boiler was the first outdoor furnace manufacturer to become U.S. EPA Phase 1 and Phase 2 Hydronic Heater Program qualified. Central Boiler has produced more furnaces and has produced them for a longer time than competitors. The desire to manufacture the best and always strive to make it better is at the core of the company's success.



1. Charge Tube - Crossfire air system adds preheated air in all the right places around the base of the fire. As the wood begins to gasify, the gases are added to the extremely hot oxygen from the patent-pending **Charge Tube**. This starts the secondary combustion process.

2. Large Reaction Chamber™ - Final combustion takes place as these gases move downward to the **Reaction Chamber**. There, extremely high temperatures aid in complete combustion. This entire process gives this furnace its high efficiency and extremely low emissions. The large, hinged door provides for easy ash removal.

3. Optional Gas-fired Wood Ignition - With the push of a button, the power ignition will light or automatically relight the fire if needed.

4. Urethane Spray Foam Insulation - Provides a 100% airtight, waterproof seal around the water jacket.

5. High Capacity Water Jacket - Provides a balance between firebox volume and water capacity for optimum performance.

6. Insulated Chimney - Two 4-foot all stainless steel insulated chimney sections are standard.

7. All-Weather Steel Siding - Tighter weather seal, powder coated panels, high durability.

8. Vent Cap - Design eliminates evaporation.

9. Triple Insulated Firebox Door - Large loading door, lockable, superior door closure, triple insulated for maximum efficiency.

10. Bypass Door - Redirects the exhaust before opening the firebox door.

11. LED Lights (Photo Electronic Controlled) - Energy-efficient LED night lights illuminate the inside, front and sides of the firebox.

12. Xtract Heat Exchanger - Optimizes the transfer of heat from the extremely hot gases to the water. Vertical design minimizes maintenance.

13. FireStar™ II Electronic Controller with E-Link Technology and FireStar XP - Controller's technology optimizes the gasification process by automatically adjusting the primary and secondary air for a cleaner and more efficient burn. It monitors all functions of the furnace and can store and share operational data. The optional **FireStar XP** wi-fi module allows you to connect to your E-Classic outdoor furnace from anywhere by web-enabled computer, smart phone or tablet. You can also view performance and history including local temperature, real-time status, charts and graphs.

14. Insulated Rear Access Panel - Allows access to the Reaction Chamber door, power disconnect and pumps.

15. EPA Hangtag - E-Classic furnaces are all U.S. EPA Phase 2 Hydronic Heater Program qualified.



E-Classic 1450

E-Classic 2400

E-Classic 3200

More Choices for Proper Sizing

Central Boiler offers the largest line-up of EPA Phase 2 qualified furnaces, so you will find the right furnace for your needs. To find the E-Classic model that's right for you, contact your local Central Boiler dealer or visit the Central Boiler website and use the sizing chart. Remember, once you have a cheap and reliable source of heat, you may decide to heat an extra building, pool or hot tub. Consider that possibility when sizing your new furnace. Central Boiler sizes its furnaces to the application based on heat load, not square footage. Btu requirements can vary greatly due to heat loss from cold air infiltration, insulation quality, amount of glass windows and doors, ceiling height and severity of outdoor temperatures. So whether you're heating a 100-year-old farm house, a shop or newly built home, Central Boiler has the right size furnace for your individual heating needs.

*"This is my fourth winter owning a Central Boiler.
It has literally paid for itself at least twice already.
The **best investment** I think I ever made."
Dwayne, OH*



E-Classic - Feature Comparison



"I am a contractor, licensed plumber, and electrician. I have installed and maintained over twenty different outdoor wood burning furnaces. Some that were other brands. In my opinion the Central Boiler outdoor furnace is the highest quality, most durable, and most efficient on the market today. I own two of them and would not trade for any other brand!"

Dan, IN



E-Classic
3200



PM350

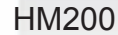
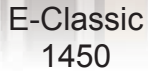


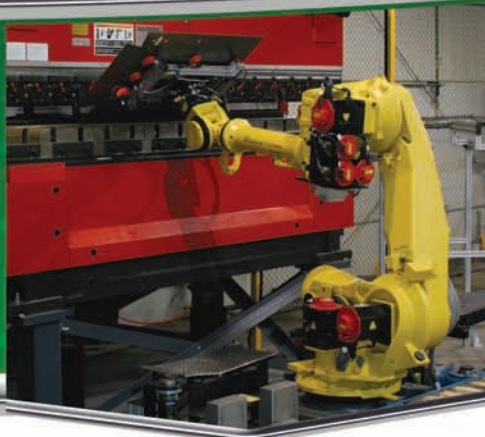
E-Classic
2400



HM400

Price	\$15,300	\$15,500	\$11,690	\$13,495	
Price per Cubic Foot	\$478	\$574	\$487	\$613	
Urethane Insulation	✓		✓		
Automated, Combustion Control	✓		✓	✓	
Vertical Heat Exchangers	✓		✓		
FireStar™ II Controller	✓		✓		
E-Link Feature	✓		✓		
Wi-Fi Capability	✓		✓		
Air Pulse Feature	✓		✓		
Rear Bypass	✓		✓		
LED Night Lights	✓		✓		
Removable Air Channels	✓		✓		
Firebox Cubic Feet	32	27	24	22	
Door Measurement (inches)	22.5 x 28.5	18 x 26	22.5 x 28.5	18 x 26	
Pricing may vary based on a variety of factors and is subject to correction and change without notice.					

15



Manufacturing the Best

State-of-the-art CNC machines cut and form the material with unmatched precision. At Central Boiler, higher standards and superb manufacturing techniques result in a proven end product.



Quality and Innovation

Central Boiler has a reputation for producing a high-quality and efficient product, and is the largest manufacturer of outdoor wood furnaces in North America.



Fully Stocked and Ready to Ship

Central Boiler has thousands of square feet of space dedicated to inventory which our dealer network may access. Multiple shipping options are available to our dealers six days a week.

Central Boiler, located in Greenbush, Minnesota, was established in 1984. Based upon a desire to create safer and more efficient heating products, the company's innovations and patents have established Central Boiler as a leader in product quality. The uncompromising attitude to manufacture the best and always strive to make it better is at the core of the company's growth.



Central Boiler, Inc.
20502 160th Street • Greenbush, MN 56726

©2013 Central Boiler

® TM Trademarks of Central Boiler, Inc.

Printed in the United States 3/13

Content of this brochure is information in possession of Central Boiler at the time of the design of this publication. Product pricing, specifications and appearance subject to change. This information is based on questions answered by dealers as well as competitors' brochures, websites and printed publications available at the time. Calculations are based on measurements available and our understanding of useable firebox dimensions. Variations are possible due to unreported changes in firebox sizes by manufacturers. Consider location and direction smoke may travel with prevailing winds before installing your furnace.

p/n 9000141

Your Authorized Central Boiler Dealer

Wes & Amanda Chin

www.MyHeatingOptions.com

(406)885-4328